



EMERGENCY
MANAGEMENT
INSTITUTE

Unit 5. Establishing the Morgue



FEMA

Visual 5.1
Mass Fatality Incident Response

Unit Objectives

- **Identify sites within their jurisdictions that are suitable for use as an incident morgue.**
- **Describe the work station requirements for an incident morgue.**
- **Describe additional morgue requirements.**
- **Determine when temporary morgues are required and how many might be required.**
- **Determine the personnel qualifications required to conduct morgue operations.**



FEMA

Establishing the Morgue

What would you look for in a morgue?



FEMA

Visual 5.3
Mass Fatality Incident Response

Incident Morgue Requirements

- **Convenient but secure**
- **Adequate size**
- **Infrastructure for communications, lighting, HVAC, restrooms, water, drainage, and other support needs**
- **Accessible**



FEMA

Visual 5.4
Mass Fatality Incident Response

Additional Morgue Requirements

- Security and storage for personal effects
- Removed from public view
- Nonporous or disposable flooring
- Office space
- Tractor trailer/forklift Accessible

Typical size is 8,000-10,000 square feet.



FEMA

Morgue Facilities

What types of buildings are best suited for morgue operations?



FEMA

Visual 5.6
Mass Fatality Incident Response

Morgue Facilities



Best in:

- Abandoned warehouses
- Armories
- Aircraft hangars

NEVER in:

- Schools or hospitals
- Churches
- Structures with wood floors



FEMA

Additional Morgue Requirements

- Restrooms
- Rest and debriefing areas
- Refreshment/lunch area
- Office space



FEMA

Visual 5.8
Mass Fatality Incident Response

Morgue Supply Requirements

What supplies should be stocked at each morgue site?



FEMA

Visual 5.9
Mass Fatality Incident Response

Morgue Personnel Requirements

What types of expertise do you need to staff the morgue?



FEMA

Visual 5.10
Mass Fatality Incident Response

Morgue Personnel Requirements

- Remains handlers
- Trackers
- Pathologists
- Anthropologists
- Dentists
- Records librarians
- Radiography technicians
- Photographers



FEMA

Visual 5.11
Mass Fatality Incident Response

Morgue Personnel Requirements

- Personal effects technicians
- DNA technicians
- Fingerprint experts
- Supply clerk
- Security personnel
- Morgue safety personnel
- Morgue medical personnel



FEMA

Visual 5.12
Mass Fatality Incident Response

Morgue Organization

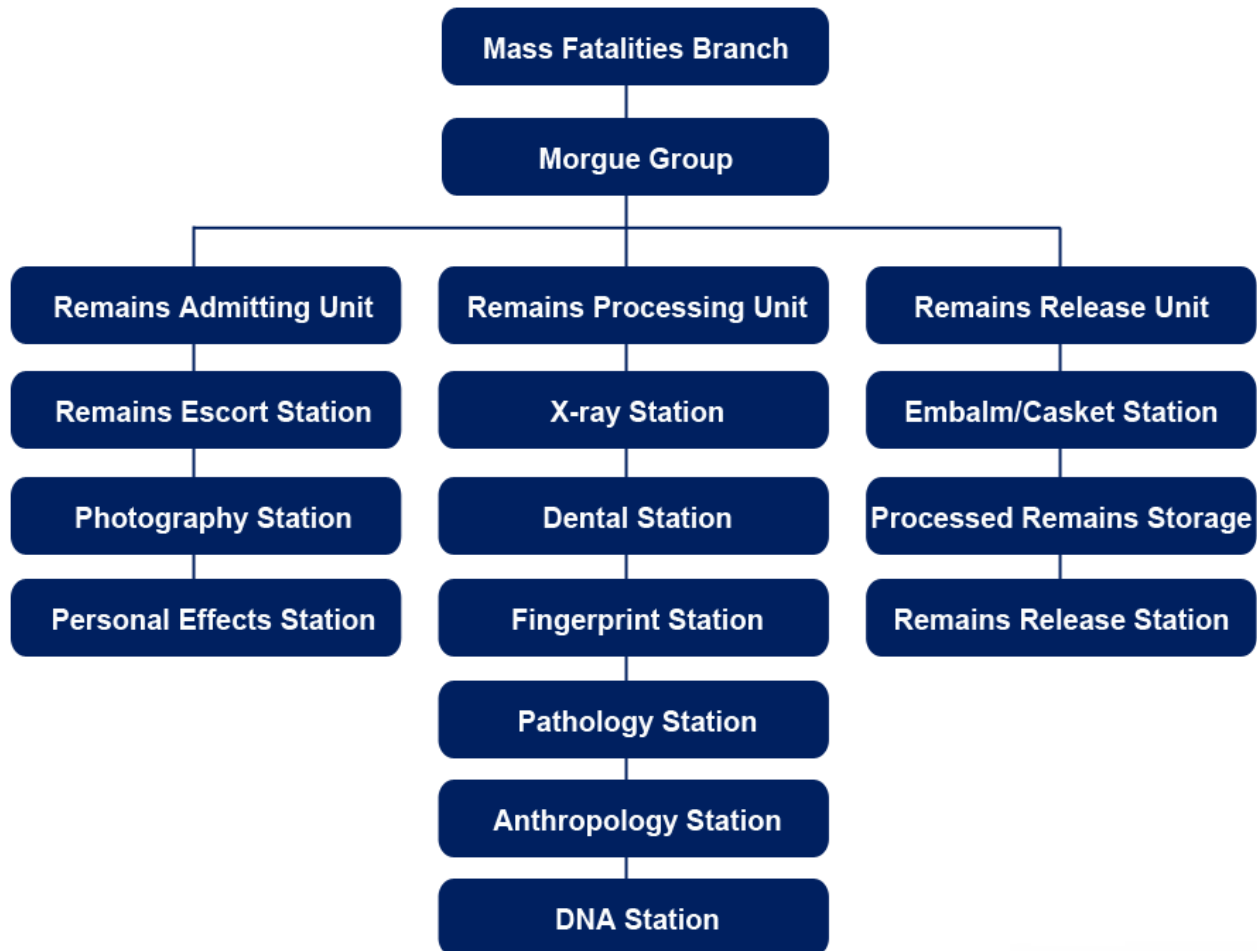
How should the morgue team be organized?



FEMA

Visual 5.13
Mass Fatality Incident Response

Morgue Organization



FEMA

Visual 5.14
Mass Fatality Incident Response

Remains Storage

**How do you determine whether
and how many refrigerated
trucks are necessary?**



FEMA

Visual 5.15
Mass Fatality Incident Response

Refrigerated Truck Requirements

“Rule of Thumb:”

1 refrigerated truck for 20-25 sets of remains



FEMA

Visual 5.16
Mass Fatality Incident Response

Morgue Stations

- Triage of remains
- Receiving, photography, and personal effects
- Radiology
- Anthropology
- Pathology



FEMA

Visual 5.17
Mass Fatality Incident Response

Morgue Stations

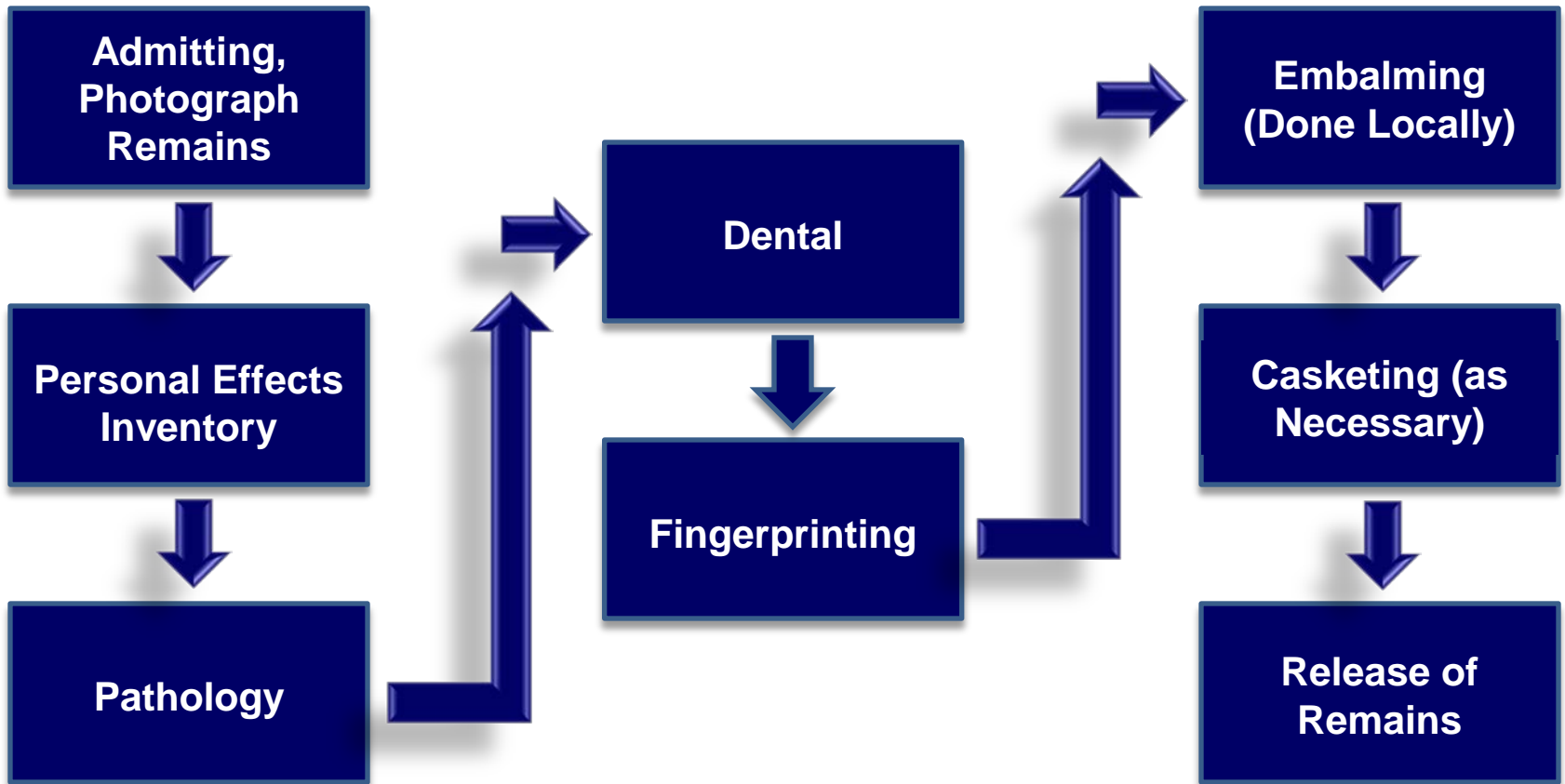
- Dental examination
- Fingerprint examination
- DNA collection
- Embalming
- Casketing and Release



FEMA

Visual 5.18
Mass Fatality Incident Response

General Sequence of Morgue Stations



FEMA

Visual 5.19
Mass Fatality Incident Response

Managing Victim Data

- A database is recommended for managing victim data on large incidents.
- Data that must be maintained includes:
 - Number of remains.
 - Names of the victims that have been identified.
 - Means of identification.



FEMA

Visual 5.20
Mass Fatality Incident Response

Managing Morgue Security

Security at morgue sites is imperative.

- **The incident will cause intense interest from the media and public.**
- **A security service should be assigned 24/7.**
- **All morgue personnel should have ID badges.**
- **The badges should be checked on every entry.**



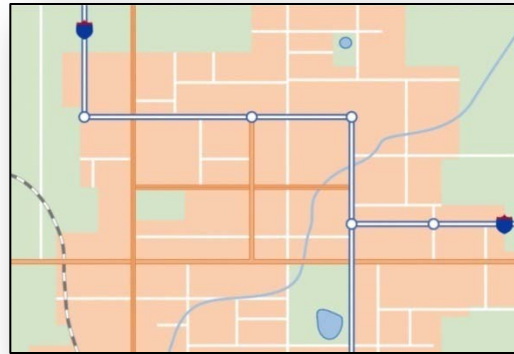
FEMA

Visual 5.21
Mass Fatality Incident Response

Unit Summary



**Morgue
Establishment**



Morgue Location



**Morgue
Organization**



FEMA

Visual 5.22
Mass Fatality Incident Response