



OFFICE OF THE DIRECTOR

DATE:

September 02, 2021

TO:

The Honorable Tom Wolf
Governor
Commonwealth of Pennsylvania

FROM:

Randy Padfield
Director, PA Emergency Management Agency

TIME PERIOD:

This report covers the period 0600 hours, September 01, 2021 through 0600 hours, September 02, 2021.

STATUS REPORT: (as of 0600 hours)

THREAT STATUS:

National Terrorism Advisory System: The Secretary of Homeland Security has issued a new National Terrorism Advisory System (NTAS) Bulletin regarding the current heightened threat environment across the United States. The Homeland continues to face a diverse and challenging threat environment leading up to and following the 20th Anniversary of the September 11, 2001 attacks as well religious holidays we assess could serve as a catalyst for acts of targeted violence. These threats include those posed by domestic terrorists, individuals and groups engaged in grievance-based violence, and those inspired or motivated by foreign terrorists and other malign foreign influences. These actors are increasingly exploiting online forums to influence and spread violent extremist narratives and promote violent activity. Such threats are also exacerbated by impacts of the ongoing global pandemic, including grievances over public health safety measures and perceived government restrictions.

Effective: 08/13/2021 1400 hours to 11/11/2021 1400 hours.

Commonwealth Response Coordination Center (CRCC) Status: Supporting the "Heroin and Opioid Disaster Emergency Declaration"

Supporting response to Tropical Storm Ida

Department of Health Operations Center (DOC): Activated in support of the COVID-19 Outbreak – Conducting public health and medical coordination

County EOC Activations: Blair – Enhanced watch for COVID-19
Cumberland - Partial activation for COVID-19
Delaware – Partial activation for COVID-19

Huntingdon - Enhanced watch for COVID-19
Lebanon - Level III monitoring for COVID-19
Philadelphia - Partial activation for COVID-19
Union - Level II monitoring for COVID-19

Allegheny - Level III for Tropical Storm Ida
Blair - Activated for Tropical Storm Ida
Bucks - Partial activation for Tropical Storm Ida
Chester - Partial activation for Tropical Storm Ida
Delaware - Activated for Tropical Storm Ida
Franklin - Level III for Tropical Storm Ida
Lancaster - Partial activation for Tropical Storm Ida
Lebanon - Level III for Tropical Storm Ida
Montgomery - Level III for Tropical Storm Ida
Northampton - Enhanced for Tropical Storm Ida
Philadelphia - Activated for Tropical Storm Ida
Washington - Activated for Tropical Storm Ida

Municipal EOC Activations: None

CAPABILITIES STATUS:

PA All-Hazards Type-3 Incident Management Team - Mission Capable

PA-Task Force 1 (PA-TF1) - Two members activated in Baton Rouge, Louisiana and the remainder of the team staged in Birmingham, Alabama. Both missions are in support of Hurricane Ida. Teams are returning to Pennsylvania.

INFRASTRUCTURE STATUS:

Major Road Closures: I-83 North at Conewago - York County
US-30 at Lake Rd - York County
PA-309 South at I-78 - Lehigh County
PA-309 North at Mosserville Rd - Lehigh County
PA-309 South at Ambler - Montgomery County
PA-309 North at FT. Washington - Montgomery County
PA-309 both directions at Pumping Station Rd - Bucks County
PA-309 North at Cherry Rd - Bucks County
US-1 both directions at Chadds Ford School Dr. - Chester County
US-222 both directions at PA-272 - Lancaster County
I-676 both directions at Ben Franklin Parkway - Philadelphia County

Power Outage Reports: As of 0530 hours, 97,490 customers
Telephone Outage Reports: Luzerne County - 485 Frontier Communications Customers

SIGNIFICANT EVENTS:

OPEN:

ROAD CLOSURE - York County, 9/2/21 - A tractor-trailer accident closed Interstate 83 north at Exit 28 in Conewago Township. A trapped queue of approximately a half mile was

reported. Traffic is being detoured off at Exit 28. An undetermined quantity of diesel fuel was spilled. It is unknown if any soil, drains, or waterways were impacted.

ADVERSE WEATHER EVENT – Statewide, 9/1/21 – The Commonwealth Response and Coordination Center (CRCC) activated at 0800 hours on 9/1/21 to support response to the remnants of Hurricane Ida. The remains of the storm began to cross into Pennsylvania Tuesday overnight, bringing heavy rain and triggering Flood, Flash Flood, and Tornado Watches and Warnings across the state. Swift water teams were pre-staged in several areas of the Commonwealth. PA-HART was activated. Numerous counties activated their EOCs. Statewide power outages peaked at over 122,000. The heaviest impacts were due to flooding which resulted in evacuations and widespread road closures. Governor Wolf has issued a statewide Proclamation of Disaster Emergency.

EVACUATION – Allegheny County, 9/1/21 - Emergency crews preemptively evacuated an unknown number of residents along Railroad Street in the Borough of Bridgeville due to the threat of a creek overflowing its banks. Evacuated residents were offered shelter at the Bridgeville Fire Station until waters recede. Bridgeville Borough is experiencing flooding on Baldwin, Carol, and McLaughlin Run Roads. The borough has issued a Disaster Declaration. The county EOC activated to Level III.

EVACUATION – Cumberland County, 9/1/21 - An evacuation recommendation was issued for Williams Grove Trailer Park located at 1550 Williams Grove Road in Monroe Township. A temporary shelter was established at Monroe Township Fire Company. PSP went door to door in the Williams Grove Trailer Park and determined 114 individuals were not evacuating. It is estimated that approximately 250 individuals live in the park. The county EOC is activated.

EVACUATION - Dauphin County, 9/1/21 - Steelton Borough and Middle Paxton Township submitted Disaster Declarations. Derry Township evacuated the neighborhood at Hillcrest Drive and Sunset Drive due to rising water. The county EOC activated and has since returned to normal operations.

ADVERSE WEATHER – Montgomery County, 9/1/21 – Interstate 76 east was closed for approximately four hours due to flooding. Three workers became trapped in a quarry at on Indian Creek Road, Lower Salford Township when the area became washed out. A PA-HART CH-47 was deployed to the scene to assist with the rescue. On arrival, the three were able to walk out on their own and PA-HART was waved off and has returned to base. The county EOC is activated.

EVACUATION – Monroe County, 9/1/21 – The Fawn Valley Trailer Park, consisting of 100 people in 40 trailers, in Hamilton Township was evacuated to Stroudsburg High School due to flooding.

EVACUATION – Philadelphia County, 9/1/21 - The fire department evacuated an apartment building with 40 individuals on Venice Island in the Manayunk section of Philadelphia City due to flooding. I-676 is closed in both directions between Ben Franklin Parkway/23rd St. and Broad St /Central Philadelphia due to flooding. There is no trapped queue and minimal backlog. There are multiple surface streets closed due to flooding. Major flooding is expected along the Schuylkill River. The Philadelphia EOC is activated.

EVACUATION – Schuylkill County, 9/1/21 - Spring Street in Tremont Borough was evacuated as a precaution due to high levels of the Good Spring Creek. The evacuees were housed at the Tremont Fire Company. Moon Lake in Barry Township overtopped the dam.

Mountain Water Authority of Joliett is currently out of power. The county EOC was activated and has since stood down.

SILVER LAKE DAM OVERTOPPING - York County - York County activated their EOC and began following the Emergency Action Plan due to the Silver Lake Dam overtopping. There were 16 people evacuated. All found other accommodations. There was no need for Red Cross assistance or sheltering. The York county EOC activated and has since closed.

EVACUATION - Lehigh County, 9/1/21 - Approximately 30 residents were evacuated from Adams Island on the Lehigh River in the City of Allentown due to rising flood waters. No shelter was designated for the residents.

EVACUATION - Lehigh County, 9/1/21 - Residents of 7th St Village, Slatington Borough were evacuated to Northern Lehigh Middle School due to rising waters. There are 25 units in the building owned by the Lehigh County Housing Authority.

EVACUATION - Lehigh County, 9/1/21 - Approximately 30 residents were evacuated from Adams Island on the Lehigh River in the City of Allentown, Lehigh County, due to rising flood waters. No shelter was designated for the residents.

EVACUATION - Luzerne County, 9/1/21 - The City of Wilkes-Barre issued mandatory evacuations for South Franklin, Regent, Barney and Waller Streets. Residents in Wilkes-Barre City were also evacuated from Stark, Sturdevant, Cedar, Huston, Horton, Carlisle, and South Franklin Roads and the lower section of the Valley Stream trailer park due to flooding.

EVACUATION - Chester County, 9/2/21 - Pickering Creek Dam in Schuylkill Township exceeded the warning/evacuation stage according to the dam plan. Chester County implemented reverse 911 notifications to the residents within the evacuation zone. The evacuation zone including 75 houses / 250 residents, a PECO substation, and the Pickering Creek Water Treatment Plant. The reception center for evacuees was at Phoenixville High School. Water levels have since receded and the evacuation has been lifted. The county Emergency Operations Center is now operating at a Level II, Partial Activation.

EVACUATION/WATER RESCUE - Bucks County, 9/1/21 - The Covered Bridge Apartments at 121 S 2nd Street in Perkasio Borough were evacuated due to flooding. Approximately 30 residents were taken to Pennridge High School. During the evacuation, two marine units with seven responders on board became trapped in swift moving water. Additional boats were sent and assisted the rescuers. They were taken to an area hospital. The county EOC is partially activated.

PA TASK FORCE 1 ACTIVATION / ALERT - Out of State, 8/27/21 - In support of Hurricane Ida operations, two members of PA Task Force 1 have been activated to the State Marshal's Headquarters in Baton Rouge, Louisiana. PA Task Force 1 (80 members, Type 1) was put on alert on 8/27/21 and staged at Philadelphia's Special Operations Center; they departed for Selma, Alabama on 8/28/21. They arrived later that evening in Birmingham, due to finding enough lodging for the whole team. As of 8/30/21, they continue to stage in Birmingham, Alabama while they are held by FEMA Region Four for the next two days, unless further storm damage and flooding requires their deployment in Region Four. Wednesday, 8/31/21, the team arrived in Greensboro, North Carolina to rest for the night. In the morning a Type 3A water rescue team will break off from the rest of the task force and will stage in Lancaster County to support the response for the remnants of Ida. The rest of the team will continue back home to Philadelphia.

WATER EMERGENCY – Carbon County, 7/26/21 – A disaster emergency was declared for Summit Hill Borough due to a prolonged interruption of municipal water supply. This interruption is due to the borough having work done on their water tank which is impacting normal water supply operations. No critical care facilities are impacted. Approximately 3,100 customers are affected. Two 10,000-gallon potable water tanks were connected to the water system to assist in providing pressure to the water grid. Fire units will be utilizing tankers for fire operations. Water tank repairs are ongoing. The repairs are extensive and could take one month or more. As of 8/17/21, work continues, and estimated completion is the last week of August.

CLOSED:

POWER OUTAGE/WIRES DOWN - Allegheny County, 9/2/21 – A power outage in Duquesne City due to a train pulling down power lines and utility poles along the railroad tracks in the area under the Duquesne/McKeesport Bridge. Rail traffic was stopped. This is a freight only line. The affected wires supply power to the river navigation beacons and bridge markers in the area. Power was restored and rail traffic resumed.

ROAD CLOSURE - Lebanon County, 9/1/21 - A tractor Trailer rolled over closing southbound lanes of Interstate 81 at mile marker 87 in East Hanover Township. The road was open in three and a half hours.

BOMB THREAT/EVACUATION - Carbon County, 9/1/21 - The Galleria Resort at 428 Moseywood Road in Kidder Township was evacuated due to a bomb threat. The resort received an email that stated the building will explode in 12 hours and the person wanted \$25,000. 150 guests were relocated to the Lake Harmony Fire Hall and the Mount Laurel Resort. Nothing was found and guests returned in two hours.

EVACUATION OF NURSING HOME - Bedford County, 9/1/21 – 26 residents of the Rebecca Personal Care Home on Masters Avenue in Everett Borough were relocated to the Everett Methodist Church due to a fire. They returned after approximately 10 hours.

DISASTER DECLARATIONS:

8/31/21 - The Honorable Tom Wolf, Governor of the Commonwealth of Pennsylvania, signed a statewide Proclamation of Disaster Emergency on 8/31/21 in response to severe winter event Hurricane Ida that impacted the Commonwealth of Pennsylvania causing wide spread threats of serious flash and riverine flooding and other adverse impacts throughout the Commonwealth.

7/29/21 - The U.S. Small Business Administration issued SBA disaster declaration #17054 and #17055, PA-00111 for Flash Flooding that occurred 7/12/21. The following areas have been determined to be adversely affected by the disaster. The primary counties are Bucks, Philadelphia, and Tioga. In addition, the declaration covers the contiguous counties of Bradford, Delaware, Lehigh, Lycoming, Montgomery, Northampton, and Potter. There is a Physical Loan Damage Application Deadline Date of 9/27/21 and an Economic Injury (EIDL) Loan Application Deadline Date of 4/29/22.

2/1/21 – A Disaster Declaration was issued for Lackawanna and Carbon Counties for events and damages related to Winter Storm Arlene.

2/1/21 - The Honorable Tom Wolf, Governor of the Commonwealth of Pennsylvania, signed a statewide Proclamation of Disaster Emergency on 2/1/21 in response to severe winter event

that began to impact the Commonwealth Pennsylvania on 1/31/21, causing dangerous winter weather conditions including snow, ice accumulation, and high winds.

12/18/20 - The U.S. Small Business Administration issued SBA disaster declaration #16815 and #16816, PA-00108 for Tropical Storm Isaias that occurred 8/04/20. The following areas have been determined to be adversely affected by the disaster. The primary counties are Berks and Philadelphia. In addition, the declaration covers the contiguous counties of Bucks, Chester, Delaware, Lancaster, Lebanon, Lehigh, Montgomery, and Schuylkill. There is a Physical Loan Damage Application Deadline Date of 02/16/21 and an Economic Injury (EIDL) Loan Application Deadline Date of 9/20/21.

10/5/20 - The Honorable Tom Wolf, Governor of the Commonwealth of Pennsylvania, requested that President Trump declare a major disaster for nine Pennsylvania counties in the wake of devastating flooding caused by Tropical Storm Isaias in August 2020. The request included Berks, Bucks, Chester, Delaware, Lehigh, Monroe, Montgomery, Northampton, and Philadelphia counties.

8/11/20 - A Disaster Declaration was issued for Philadelphia County for events and damages related to Tropical Storm Isaias.

8/4/20 - A Disaster Declaration was issued for Montgomery County for events and damages related to Tropical Storm Isaias.

3/30/20 - Governor Tom Wolf requested a major disaster declaration from the President through the Federal Emergency Management Agency to provide additional support for state, county and municipal governments and certain nonprofits, as well as individuals who are struggling during the COVID-19 outbreak. The request for a major disaster declaration will provide the same emergency protective measures available under the nationwide emergency proclamation; the following Individual Assistance programs: Disaster Unemployment Assistance, Crisis Counseling, Community Disaster Loans and the Disaster Supplemental Nutrition Program; and Statewide Hazard Mitigation. The President approved the declaration on 3/30/20 under Major Disaster Declaration FEMA-4506-DR.

3/19/20 - A Disaster Declaration was issued for Elk, Mercer, Monroe, Snyder, Somerset, Sullivan, and Susquehanna Counties in response to the COVID - 19 outbreak.

3/18/20 - A Disaster Declaration was issued for Adams, Allegheny, Butler, Clearfield, Forest, Greene, Pike, and Schuylkill Counties in response to the COVID - 19 outbreak.

3/17/20 - A Disaster Declaration was issued for Cambria, Cameron, Clarion, Clinton, Crawford, Cumberland, Fulton, Juniata, Lancaster, Lawrence, Lebanon, Northumberland, Potter, Warren, and Washington Counties in response to the COVID - 19 outbreak.

3/16/20 - A Disaster Declaration was issued for Bedford, Beaver, Blair, Cameron, Carbon, Columbia, Erie, Franklin, Huntington, Indiana, Jefferson, Lackawanna, Lehigh, Lycoming, McKean, Perry, Tioga, Wayne, Wyoming, and York Counties in response to the COVID - 19 outbreak.

3/15/20 - A Disaster Declaration was issued for Luzerne County in response to the COVID - 19 outbreak.

3/14/20 - A Disaster Declaration was issued for Centre and Westmoreland Counties in response to the COVID - 19 outbreak.

3/13/20 – An Emergency Declaration for Public Assistance Emergency Protective Measures was issued on March 13, 2020 for all Pennsylvania counties to cover eligible costs that are directly associated with the Emergency Protective Measures being taken to respond to and protect the residents of Pennsylvania from the COVID-19 virus. The designation is EM-3441.

3/13/20 – A Disaster Declaration was issued for Bradford, Bucks, Dauphin, Fayette, Northampton, and Union Counties in response to the COVID-19 outbreak.

3/12/20 – A Disaster Declaration was issued for Allegheny, Berks, Mifflin, and Montour Counties in response to the COVID-19 outbreak.

3/08/20 – A Disaster Declaration was issued for Montgomery County in response to the COVID-19 outbreak.

03/07/20 – A Disaster Declaration was issued for Delaware County in response to the COVID-19 outbreak.

01/18/19 – The Honorable Tom Wolf, Governor of the Commonwealth of Pennsylvania signed a statewide Proclamation of Disaster Emergency on 01/18/19 due to a severe winter event that is expected to impact the Commonwealth of Pennsylvania, causing dangerous winter weather conditions including snow, ice accumulation, and flooding.

11/27/18 – A Major Disaster Declaration was declared on 11/27/18 for severe storms and flooding that occurred 8/10/18 – 8/15/18. Public Assistance (Cat A-G) was approved for Bradford, Columbia, Lackawanna, Lycoming, Montour, Northampton, Schuylkill, Sullivan, Susquehanna, Tioga, and Wyoming Counties. In addition, all areas in the Commonwealth of Pennsylvania are eligible for assistance under the Hazard Mitigation Grant Program. The designation is FEMA-4408-DR.

1/10/18 – The Honorable Tom Wolf, Governor of the Commonwealth of Pennsylvania signed a statewide disaster declaration on 1/10/2018 for the on-going heroin/opioid epidemic. It will enhance state response and increase access to treatment. The declaration is the first-of-its-kind for a public health emergency in Pennsylvania. It will utilize a command center at the Pennsylvania Emergency Management Agency to track progress and enhance coordination of the health and public safety agencies. The declaration specifies 13 key initiatives that are the culmination of a collaboration between all state agencies, with focus on the departments of Health, Drug and Alcohol Programs, the Pennsylvania Emergency Management Agency, the Pennsylvania Commission on Crime and Delinquency, and the Pennsylvania State Police. On 3/6/18, the governor amended this declaration to include the winter storm that began on 3/6/18.

12/2/16 – A Major Disaster Declaration for Public Assistance (Cat A-G) was declared on December 2, 2016 for Bradford, Centre, Lycoming, and Sullivan counties. In addition, all areas in the Commonwealth of Pennsylvania are eligible for assistance under the Hazard Mitigation Grant Program. The designation is FEMA-4292-DR.

CONTIGUOUS STATE EVENTS OF POTENTIAL INTEREST TO PENNSYLVANIA:

Delaware:	Enhanced Monitoring in support of COVID-19 response Enhanced Monitoring in support of Hurricane Ida
Maryland:	Enhanced Monitoring in support of COVID-19 response Partially activated in support of Hurricane Ida

New Jersey: Partially activated in support of COVID-19 response
Partially activated in support of Hurricane Ida
New York: Partially activated in support of COVID-19 response
Partially activated in support of Hurricane Ida
Ohio: Assessment and Monitoring in support of COVID-19 response
West Virginia: Enhanced Monitoring in support of COVID-19 response
Enhanced Monitoring in support of Hurricane Ida

24-Hour Projected Weather Statewide:

National Weather Service, 0427 hours, 9/02/21

A much anticipated early taste of fall has arrived in Pennsylvania following extreme rainfall and major flooding associated with Ida.

Expect refreshingly cooler and more comfortable conditions with no precipitation forecast through the first part of the weekend. High temperatures will be in the upper 60s to mid-70s today and Friday before trending modestly warmer on Saturday.

Passing showers return to the forecast with some light rain possible for the end of the weekend.

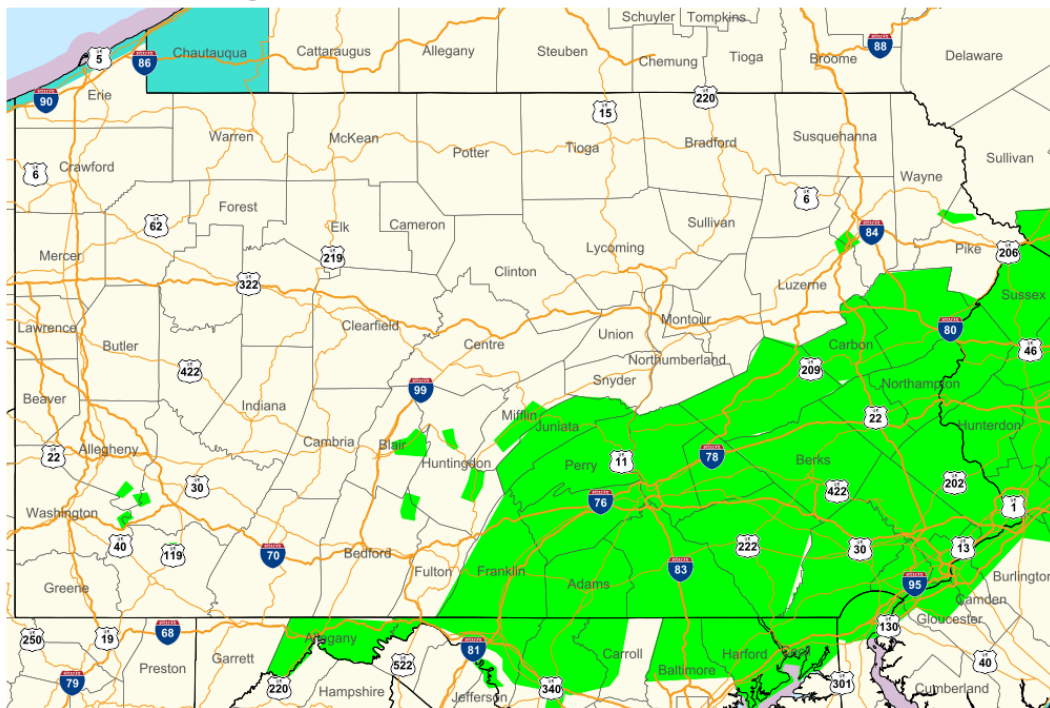
WATCHES AND WARNINGS:

Flood Warnings are currently in effect for the following counties: Adams, Bedford, Berks, Blair, Bucks, Carbon, Chester, Cumberland, Dauphin, Delaware, Delaware, Franklin, Huntingdon, Huntingdon, Indiana, Juniata, Lackawanna, Lancaster, Lebanon, Lehigh, Mifflin, Monroe, Montgomery, Northampton, Perry, Philadelphia, Pike, Schuylkill, Snyder, Union, Wayne, Westmoreland, and York.



Current Watches, Warnings, and Advisories

- Flood Warning
- Flood Warning
- Gale Warning
- Rip Current Statement
- Small Craft Advisory
- Beach Hazards Statement
- Flood Watch
- Coastal Flood Statement



Graphic Created
September 2nd, 2021
5:10 AM EDT

TROPICAL WEATHER OUTLOOK:



Two-Day Graphical Tropical Weather Outlook

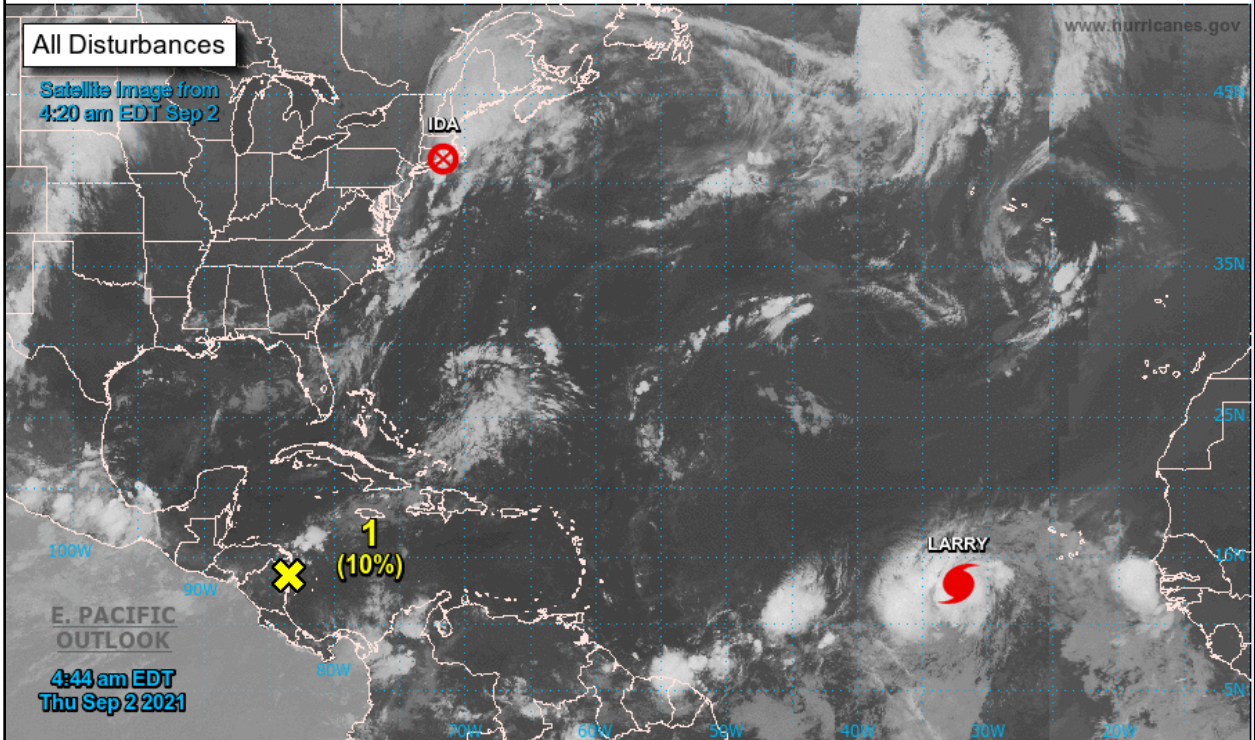
National Hurricane Center Miami, Florida



All Disturbances

Satellite Image from
4:20 am EDT Sep 2

www.hurricanes.gov



E. PACIFIC
OUTLOOK

4:44 am EDT
Thu Sep 2 2021

Current Disturbances and Two-Day Cyclone Formation Chance: < 40% 40-60% > 60%

Tropical or Sub-Tropical Cyclone: Depression Storm Hurricane

Post-Tropical Cyclone or Remnants