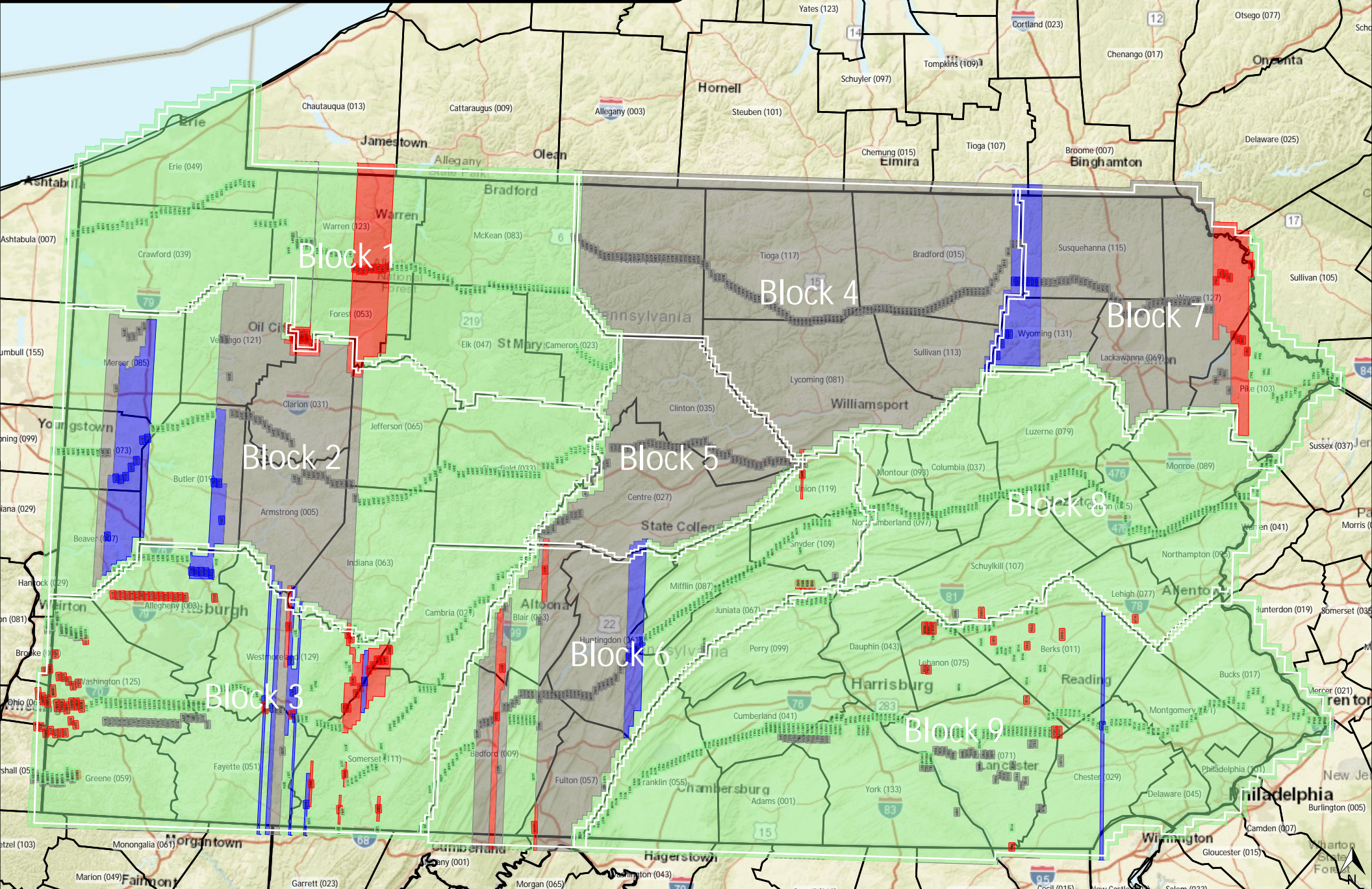




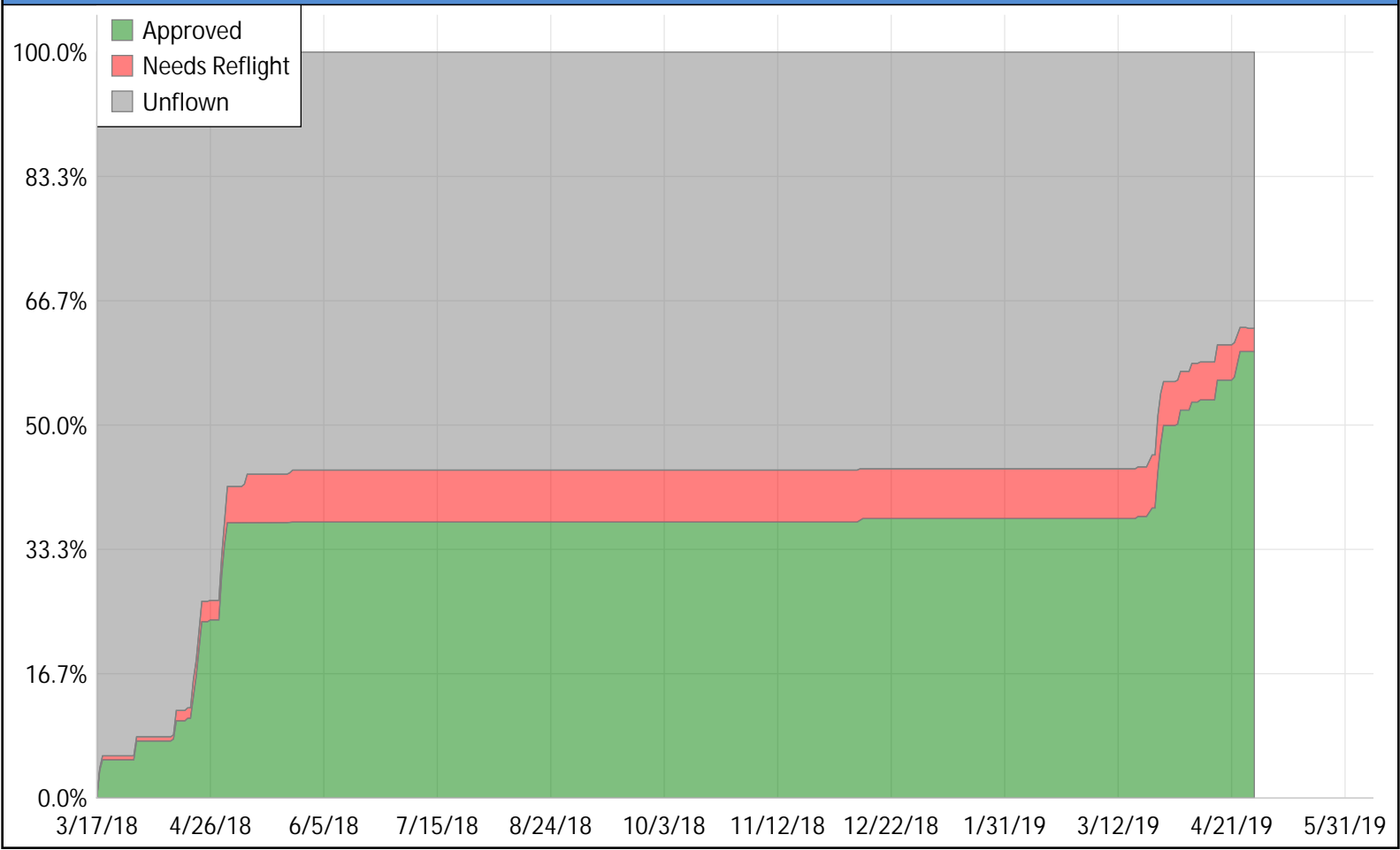
PEMA Acquisition Map (4/30/2019)

59.9% Approved / 3.1% Needs Reflight / 0.0% Production



Status	Miles	Dates	Miles	Aprv %	4/18	228	78.4%	4/30	3,258	98.4%	5/24	308	3.9%	3/24	403	77.8%	4/7	607	99.1%	4/27	857	0.0%
Planned	56,391	3/18	2,086	92.8%	4/20	1,976	78.6%	5/1	2,841	81.1%	5/25	265	10.6%	3/26	3,720	83.2%	4/10	212	80.5%	4/29	208	0.0%
Flown - Unchecked	1,540	3/19	873	84.5%	4/21	1,448	94.5%	5/2	2,774	56.7%	12/11	145	88.7%	3/27	2,704	95.4%	4/16	1,713	92.6%			
Flown - Rejected	1,751	3/31	1,329	99.2%	4/22	2,175	93.1%	5/8	400	0.0%	12/12	136	88.0%	3/28	1,642	91.9%	4/22	308	78.2%			
Flown - Approved	33,753	4/13	136	100.0%	4/23	2,130	86.7%	5/9	841	4.0%	3/19	246	96.3%	4/2	115	100.0%	4/23	1,634	63.8%			
Production	0	4/14	1,714	74.7%	4/26	178	74.0%	5/21	205	0.0%	3/23	616	62.7%	4/3	1,137	95.1%	4/24	1,028	91.7%			

PEMA Acquisition Timeline



PEMA Miles Flown By Aircraft

