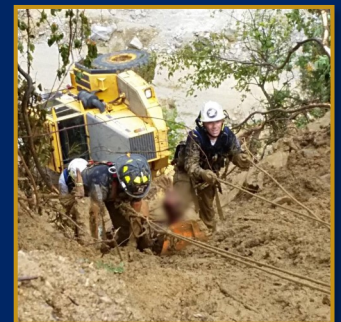
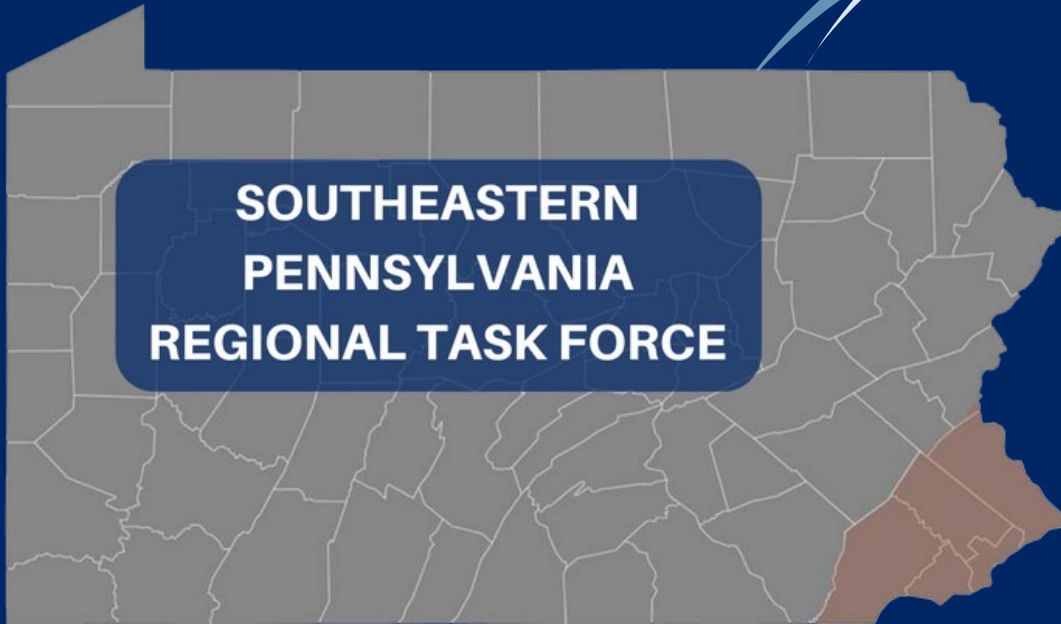




# Southeastern Pennsylvania Regional Task Force

*Homeland Security: A Return on Our Investment*



## Counties

- Bucks
- Chester
- Delaware
- Montgomery
- Philadelphia

# State-Level Coordination



## PROTECTING PENNSYLVANIA

No one can do it alone. In Pennsylvania, multiple jurisdictions, agencies, and disciplines work together to strengthen our ability to prevent, protect against, mitigate, respond to, and recover from acts of terrorism and other catastrophic events.

**Pennsylvania Criminal Intelligence Center (PaCIC)** is managed by the Pennsylvania State Police and is the primary all-hazards fusion center comprised of analysts and subject matter experts from local, state, and federal agencies. In 2016, PaCIC fulfilled almost 40,000 requests for information and developed 57,434 products, including briefs and alerts ranging from dirty bombs and the increased findings of Carfentanil in heroin, to attacks on natural gas facilities. In 2016, PaCIC completed 43 event assessments for emergency response, public sector, and private sector partners.

### Critical Partners

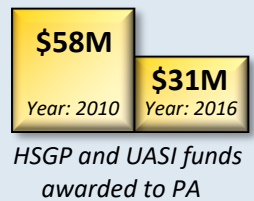
The private sector owns and operates an estimated **85%** of infrastructure and resources that are critical to our physical and economic security. GOHS has mapped over 30,000 sites in Pennsylvania.



Duke Energy's gas-powered plant, Masontown, Pennsylvania.

### Increased Demand, Decreased Funding

Homeland Security Grant Program Funding (HSGP) has dropped 48% since 2010. However, demand for services continues to increase. For example, in 2016, PaCIC received 993 reported cyber compromises, an increase of over 400 since 2015.



### How HSGP Funding Supports Agribusiness and Food Safety

- Lab systems and equipment which are critical to the safety of Pennsylvania's food supply and agriculture systems.
- Food safety communications and inspection systems for approximately 130 local and state agency health jurisdictions with food safety responsibilities.
- Equipment to enhance lab testing for real-world food contamination incidents.
- Pennsylvania is positioned to lessen the devastating effects of a disease outbreak on its poultry industry through mapping and database investment.

The **Governor's Office of Homeland Security (GOHS)** helps to secure Pennsylvania from acts of terrorism and reduce the vulnerability of Pennsylvania's critical infrastructure. GOHS provides training, exercises, and learning opportunities not otherwise available to participants. Since 2012, GOHS has provided more than **30 training courses** to over 4,000 public and private partners, **28 tabletop** prevention and protection exercises, and engaged over 7,500 participants with **29 seminars**.

The **Pennsylvania Emergency Management Agency (PEMA)** is the lead agency for the annual Threat and Hazard Identification and Risk Assessment (THIRA) and State Preparedness Report (SPR). The result is a comprehensive strategy to fund solutions that address capability gaps at state and regional levels.

**PEMA** maintains deployable assets purchased with HSGP funds to support counties during disasters; such assets include trailer-mounted generators, bathroom/shower trailers, light tower trailers, non-potable water trailers, and remotely operated camera trailers.





## Vital Statistics

The Regional Task Force is a model for intergovernmental and multi-jurisdictional cooperation.

- Municipalities: 244
- Square Miles: 2719
- Fire Departments: 322
- Police Departments: 210
- Emergency Med Service Agencies: 112
- Hospitals: 58
- School Districts: 70



## Capabilities

- Bomb Disposal Teams: 3
- County Animal Response Teams: 4
- Decontamination Teams: 10
- EMS Task Forces: 9
- Foam Teams: 14
- Hazmat Teams : 6
- Incident Support Teams: 3
- Major Incident Support Teams: 4
- Mobile Command Units: 17
- Physician Response Teams: 8
- SWAT: 17
- Tactical Communication Teams: 6
- Urban Search and Rescue Teams: 8
- Water Rescue Teams: 53



## Investment



# Regional Coordination

## SOUTHEASTERN PENNSYLVANIA REGIONAL TASK FORCE: A SHARED RESPONSIBILITY

The Southeastern Pennsylvania Regional Task Force (SEPA-RTF) understands just how essential it is to plan and collaborate for local and regional all-hazard capabilities. Notwithstanding the relatively small number of counties, the region is ranked as the seventh most at-risk in the nation by the Department of Homeland Security.



One of the many oil refineries in Southeastern Pennsylvania. Photo credit: David Parrott/Reuters

The region includes one-third of Pennsylvania’s population and contains one-third of Pennsylvania’s infrastructure including :

- PJM which is responsible for controlling the electric grid for the entire northeast corridor.
- Limerick Generating Station – the second most populated Emergency Planning Zone in the nation.
- Oil refineries which receive, refine, and distribute millions of gallons of petroleum products every week.
- Ports which serve as the entry point for produce, cargo, and other commodities.

The region is designated as a Tier 1 region for the purposes of the Urban Area Security Initiative (UASI) grant program. The SEPA-RTF has the only Tier 1 UASI in the Pennsylvania.



Satellite communications trailer ready to deploy anywhere in the region.

Counties within the SEPA-RTF collaborate to make smart resource investments to develop and sustain capabilities addressing the hazards identified in the county hazard vulnerability and risk assessments. Each county has their own unique capabilities and equipment that make the SEPA-RTF all-hazards prepared.



# COUNTY PREPARED, REGION STRONG

Each of the counties support the SEPA-RTF workgroups and programs. The structure allows for leveraging HSGP funds to invest in both county and regional capabilities. Regional capabilities include the Emergency Response Workgroup, Emergency Services Program, Fire Task Force, Hazardous Materials Committee and Urban Search and Rescue.

## Emergency Response Workgroup

The goal of the Emergency Response Workgroup (ERWG) is to make regional collaboration the “norm.” The ERWG consists of Emergency Medical Services (EMS), Fire, Hazardous Materials, Urban Search and Rescue (US&R) representatives from each of the counties in the region. The ERWG regional partnership collaborates regionally in order to maximize SEPA-RTF capabilities while also respecting the primary operational responsibility and authority to respond to emergencies vested in local and county governments.

### **Mission: Reduce Loss of Life**

The mission of the Tactical EMS program has changed to address the increase in mass shootings across the country. The program provides training and equipment to EMS responders in order to respond and survive active shooter events.

Triage and rapid treatment is critical to reducing loss of life. As a result, providers are equipped and trained to respond with first arriving police officers into areas where an active shooter may still be present. The EMS subcommittee members distributed equipment to support 17 new teams and conducted training for those receiving the equipment.



Source: FBI Report, 2017

## Resilient Capability: Fire Task Force



Annual training ensures swift, safe response to events.

In order to maximize fire response capabilities, the region leverages county equipment to create a Fire Task Force. Each of the counties in the region supports one or two fire task forces. In order to respond to any area in the region, the SEPA-RTF invested in a solution that ensures the ability to quickly respond. The Hydrant Adaptor Project, funded by the HSGP, is critical to ensuring interoperable equipment. The project included purchasing Hydrant Adaptor Kits allowing the regional fire task force or response team to tap into a hydrant system outside of their home county for fire suppression or mass decontamination support. The adaptors were a key asset during the

Papal visit to protect where the Pope lodged, as well as numerous other areas where the motorcade traveled.

## Early Detection: Improved Safety

The HAZMAT subcommittee focuses on regional detection capabilities. Homeland Security Grant Program funds directly support the region’s ability to detect and identify chemicals and chemical weapons as the result of a hazardous materials release. The unit is also able to identify multiple white powders to determine if it is a biological agent, drug, other chemical or a non-hazardous substance.

### **Technical Rescue**

The HSGP supports the region's Urban Search and Rescue (US&R) Teams through the purchase of equipment that allows for technical and difficult rescue. Capabilities include vehicle extrication, confined space rescue, trench rescue, high-angle rescue and water rescue. US&R used equipment procured through the HSGP to support the Papal visit, the Democratic National Convention, the "Made in America" festival, Wawa Welcome America festival, the Amtrak 188 derailment, 21<sup>st</sup> & Market St. collapse and recovery operations for a firefighter line of duty death.



*Derailment in Philadelphia with multiple casualties.*

*Photo Credit: AP, Patrick Semansky*

### **COUNTY CAPABILITIES: A FORCE MULTIPLIER**

The strength of the SEPA-RTF comes from the ability to leverage the maximum benefit from HSGP investments that ensure strong, local capabilities and the region as a whole.

#### **Bucks County**

Bucks County includes 3 major rail lines, 7 major roads, and the northern part of the Port of Philadelphia and Delaware Bay River navigable water way, lending itself to unique training and equipment needs. Capabilities include: several decontamination companies, animal rescue, and special response teams including HAZMAT, Technical Rescue and the Foam Task Force.

*A Return on Investment:* February 9, 2017 - Following a crash, a tanker overturned in Warrington Twp. on Rt. 611 spilling thousands of gallons of gasoline. The busy road was shut down for hours and a number of nearby communities were evacuated. The Bucks County Foam Task Force, mobile command post and the HAZMAT team responded. \$2.8 million of equipment funded by the Homeland Security Grant Program was deployed.



*Foam trailer on-scene.*

#### **Chester County**

The Chester County Fire Task Force provides rapid response and engagement with highly trained personnel who respond to major fire suppression activities anywhere within the county, region, or state. The Chester County Rescue Task Force (CCRTF) provides unparalleled technical rescue capabilities. Specialized training and equipment includes: heavy vehicle and machinery rescue; confined space rescue incidents; trench and excavation collapse or cave-in incidents; building collapses; swift water; and mass transportation accidents.



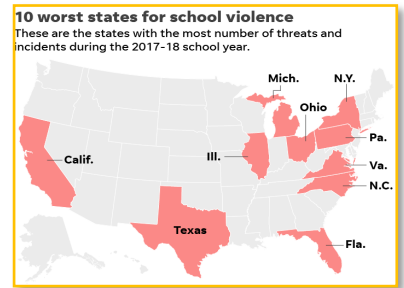
*A Return on Investment:* Friday, January 22<sup>nd</sup>, 2016 - Chester County received 25+ inches of snow resulting in numerous power outages and impassable roadways. Chester County knows that communications between local emergency management and public works is critical for a rapid, coordinated response. This event highlighted the need for interoperable communications. Making the investment with HSGP funds, Chester County has portable radio capability to ensure coordination between public works, emergency management coordinators, 911 and the Emergency Operations Center.

## COUNTY CAPABILITIES: A FORCE MULTIPLIER

### **Delaware County**

Delaware County knows that learning in schools can only happen in a safe, secure environment. Delaware County provides aerial "drones" for school safety and planning resources for schools to use during hazardous materials events.

*A Return on Investment:* HSGP funds the Safe Schools Summit bringing law enforcement, emergency management and educators together for collaborative discussion and learning. The annual summit focuses on learning from past events and future planning needs. All-hazards topics often include mental health issues, drug abuse and "sexting".



Source: Educators School Safety Network

### **Montgomery County**

Montgomery County is the third most populous county in Pennsylvania and home to the Limerick Generating Station. Equipment and training procured through the HSGP provides the capability to safely and effectively respond to hazardous incidents and/or immediately dangerous to life or health (IDLH) atmospheres.



*A Return on Investment:* On May 28, 2019 a severe microburst event, and two months later, major flooding during a record setting heat wave combined to destroy or damage dozens of homes. Task force special teams and equipment were deployed including marine rescue, urban search and rescue and emergency management damage assessment personnel. Teams searched many square miles and performed numerous rescues of citizens in peril. Assets were deployed to other counties to assist with evacuations.

August 8 2019: A tragic plane crash took the lives of three county residents. Task force assets, including unmanned aerial vehicle and mobile command post units, assisted the local police and National Transportation Safety Board for several days while processing a 400 yard debris field.



Photo Credit: Philadelphia Inquirer

### **Philadelphia County**

As the 6th most populous US city and a major economic hub, Philadelphia County provides the region with a unique search and rescue asset through the Philadelphia Police Aviation Unit. Philadelphia's Hoist 1 brings complicated rescue capabilities to the county and region.

*A Return on Investment:*

- In 2015, a Philadelphia police officer was shot with a .45 caliber handgun and only suffered blunt force trauma. They were wearing body armor purchased with HSGP funding.
- During the 2015 Amtrak derailment, HSGP funded equipment - including listening systems, shoring systems, and search cameras - was used in rescue operations.
- 2017 NFL Draft – HSGP funded equipment was used to screen individuals entering the festival area of the draft, held on the Benjamin Franklin Parkway. The Aviation Unit provided aerial reconnaissance and was able to directly digital downlink a live aerial feed to various command posts.



Philadelphia Hoist 1